

ArborTie® AT HD 15 HEAVY DUTY ANCHORING KIT

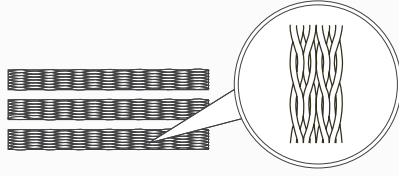
The ArborTie® Heavy Duty Anchoring Kit is the best way to secure trees in high wind areas, or for any trees that need additional support. ArborTie® never damages the tree, and our tough steel eye anchors are easy to install.

AT HD15 KIT CONTENTS



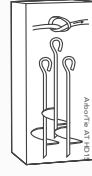
(3) 15" Steel Eye Anchors
Eye opening is 1" diameter

+



(3) 10' lengths of ArborTie® Green.
Flat-woven polypropylene material, lock stitch with rounded weave. 3/4" (1.9cm) wide, and 900 lb. (409.2 kg) break strength

=



(1) individually packaged ArborTie® Heavy Duty Anchoring Kit

SPECIFICATIONS + FEATURES

APPLICATIONS

Professional anchoring of trees up to 6" in caliper

FEATURES

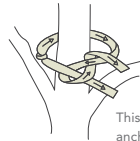
- 900 lb. break strength ArborTie® Green never damages bark
- Reusable Steel Eye Anchors
- Economical
- Easy Installation
- Assembled in the USA

INSTALLATION INSTRUCTIONS



This end to anchor

1. Tie a simple knot 18"- 24" from either end of the ArborTie®.



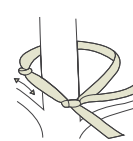
This end to anchor

2. Wrap this end around tree. Begin a new knot below the knot that was tied in Step 1.



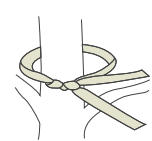
This end to anchor

3. Follow motion of ArborTie® as shown, finishing the knot by pulling tightly on points A and B at the same time.



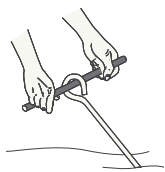
This end to anchor

4. Slide the completed knot just up to the knot tied in Step 1. Fasten free end to anchor.



This end to anchor

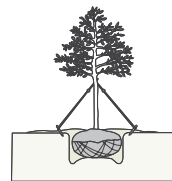
5. The ArborKnot® expands as the tree grows, providing secure, girdle free attachment of ArborTie® to tree.



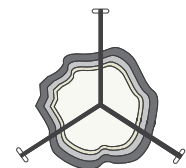
6. Secure long end of ArborTie® to the eye of the anchor. Add tension to the ArborTie® by using a straight rod to turn (screw) the anchor into the ground outside the planting hole at a 45 degree angle to the tree trunk.



7. When screwing the anchor into the ground, make sure the eye opening is buried. Anchor eye should be just even to soil level, as shown above.



8. Anchor should be placed outside of planting hole and screwed into the undisturbed soil until the ArborTie® is taut.



9. Repeat steps 6-8 for each remaining anchor. Anchors should be evenly spaced around the tree base.